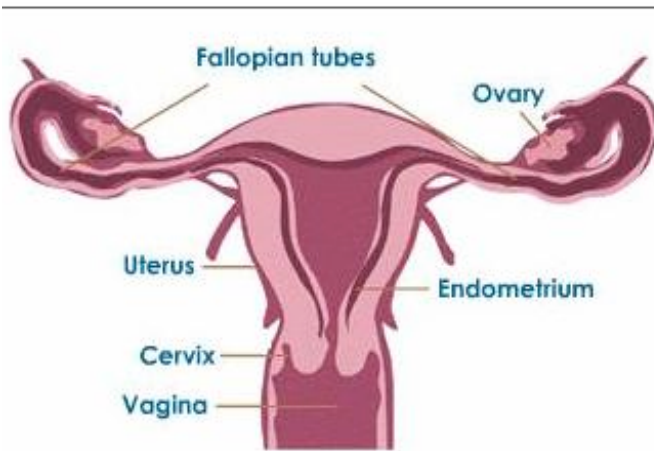


Female Reproductive System

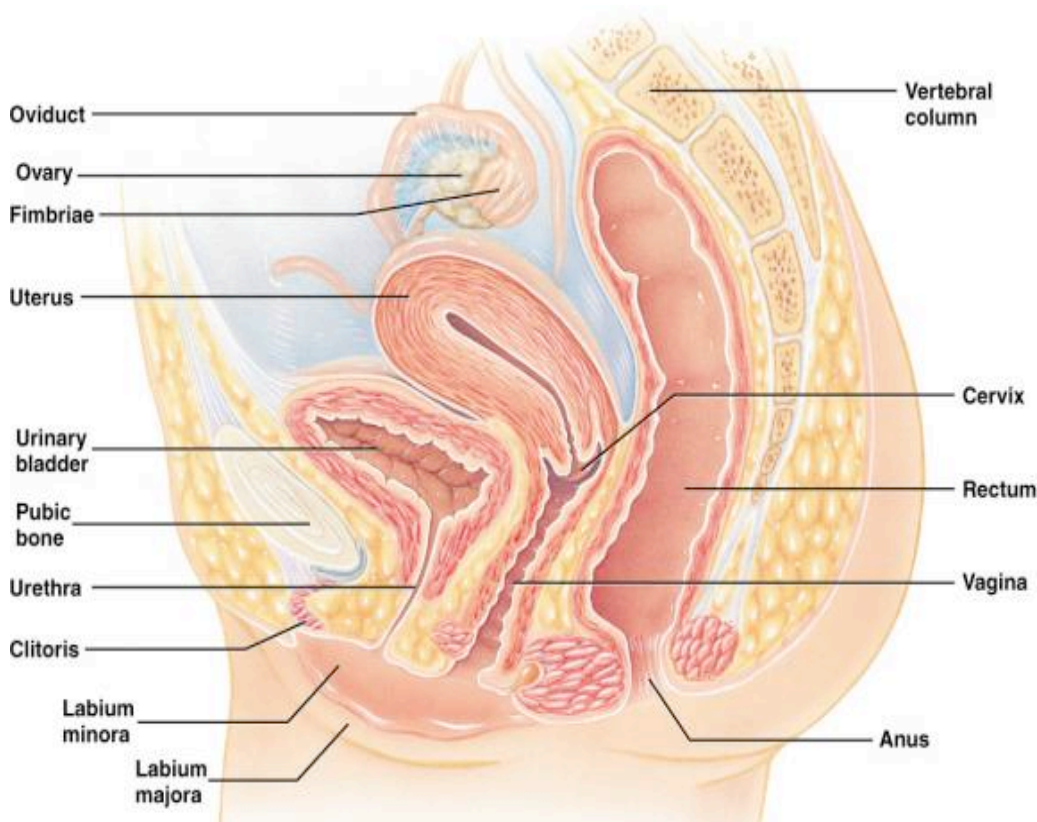


source:
<http://image.wistatutor.com/content/reproduction/female-reproductive-system.jpeg>

Human Female Reproductive System - The organs of the human female reproductive system work together to produce eggs and prepare the female's body for the possible implantation of an embryo.

Female Reproductive System Seen from the Front

The main structures of the human female reproductive system are:



1. **Ovaries** main female reproductive organs that store egg cells

2. **Fallopian tubes** the two tubes connecting ovaries to the uterus; egg is swept here during ovulation; if fertilization occurs, it occurs here.

3. **Uterus** organ in which a fertilized egg can develop.

4. **Endometrium** inner lining of the uterus

5. **Cervix**- lower third of the uterus.

6. **Vagina** canal that connects cervix to the outside of the body.

source: <http://www.glogster.com/media/4/12/36/36/12363639.jpg>

Path of the Egg

Ovary--fallopian tube—uterus—cervix--vagina

Hormone Production by the Ovaries

The ovaries produce estrogens which cause secondary sex characteristics:

- development of breasts
- appearance of auxiliary and pubic hair
- increased deposits of fat beneath skin—especially in hips and breasts
- widening and lightening of the pelvis
- onset of menses, or the menstrual cycle