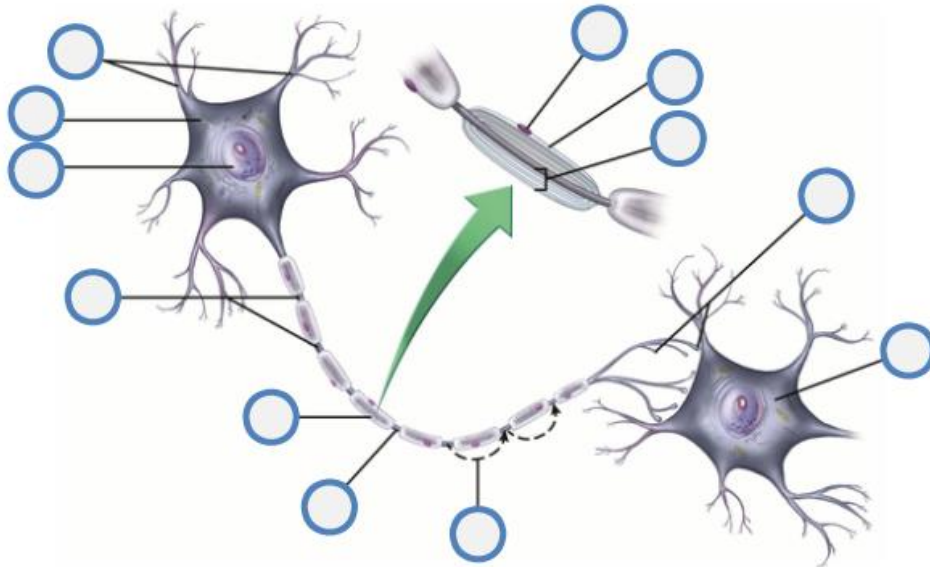


Anatomy and Physiology Final Exam

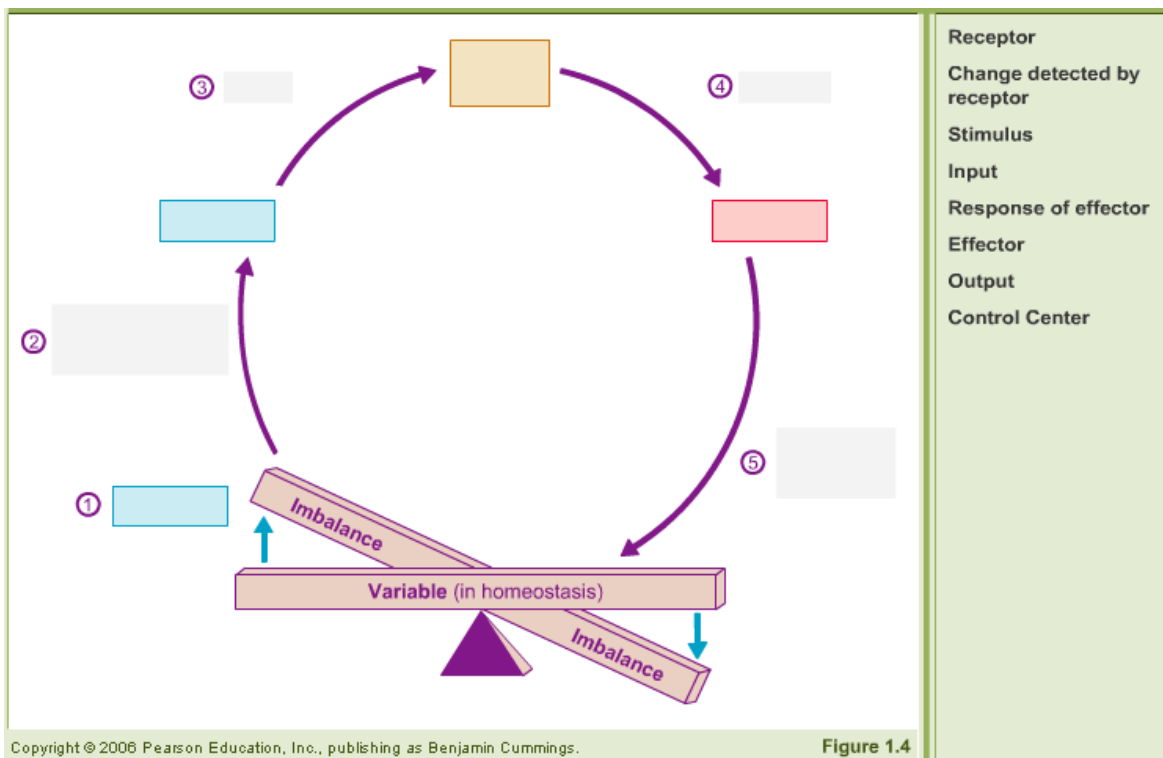
Part 1 – Complete the diagrams

1. - 13. (11 points possible)

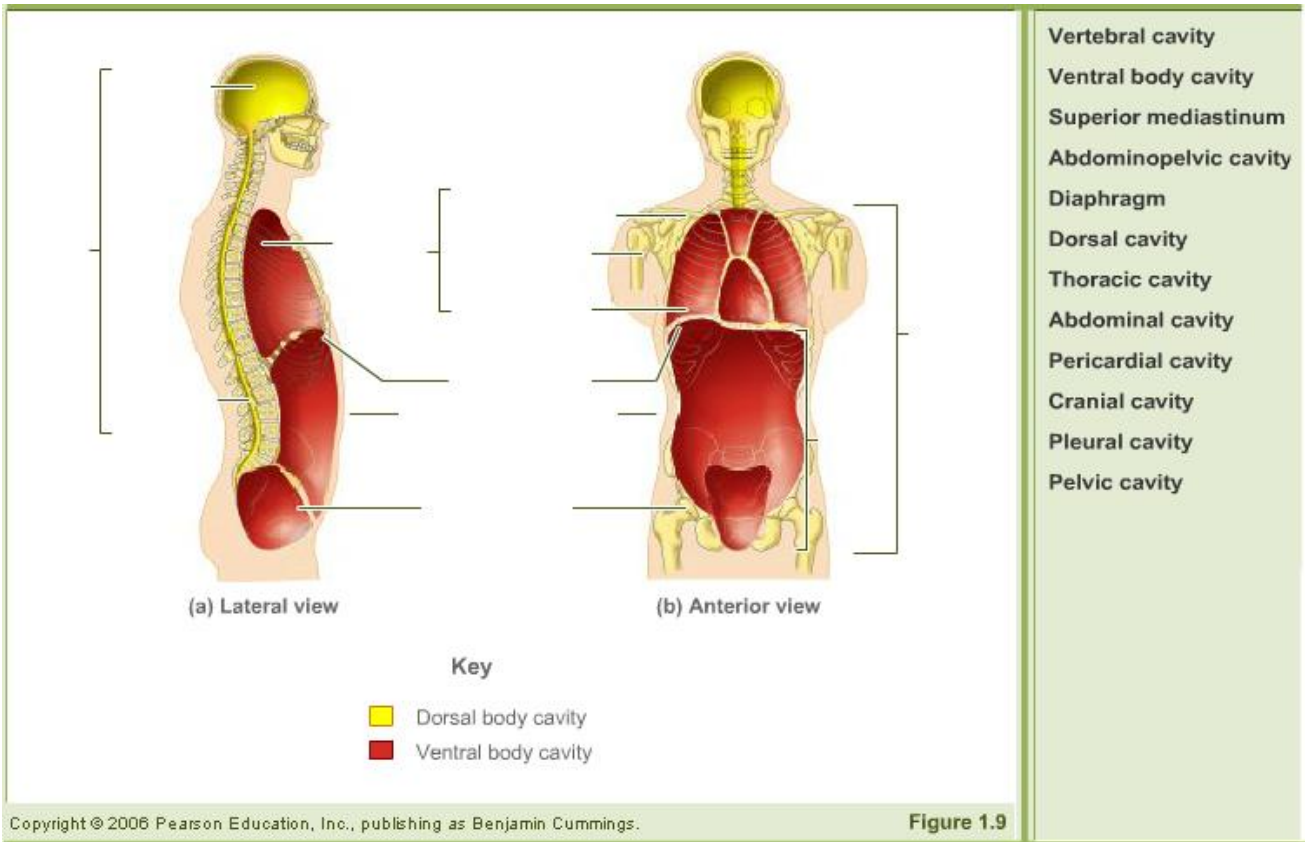
- | | | | |
|--|----------------------|-------------------------|-----------|
| Axon | Axon terminals | Cell Body | Dendrites |
| Myelin sheath | Neurilemma | Nodes of Ranvier | Nucleus |
| Postsynaptic cell
body of another
cell | Saltatory conduction | Schwann cell
nucleus | |



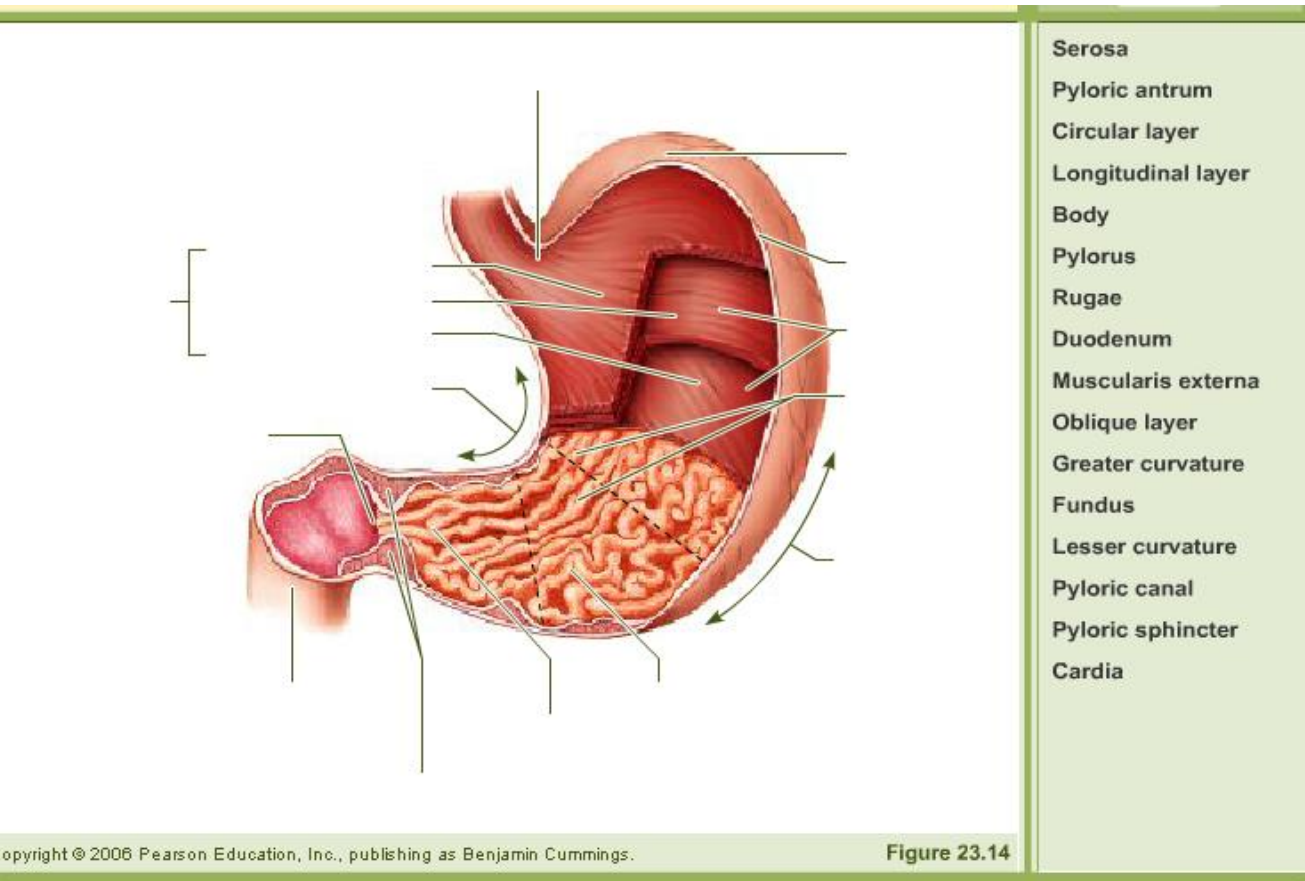
14. – 21. (8 points possible)



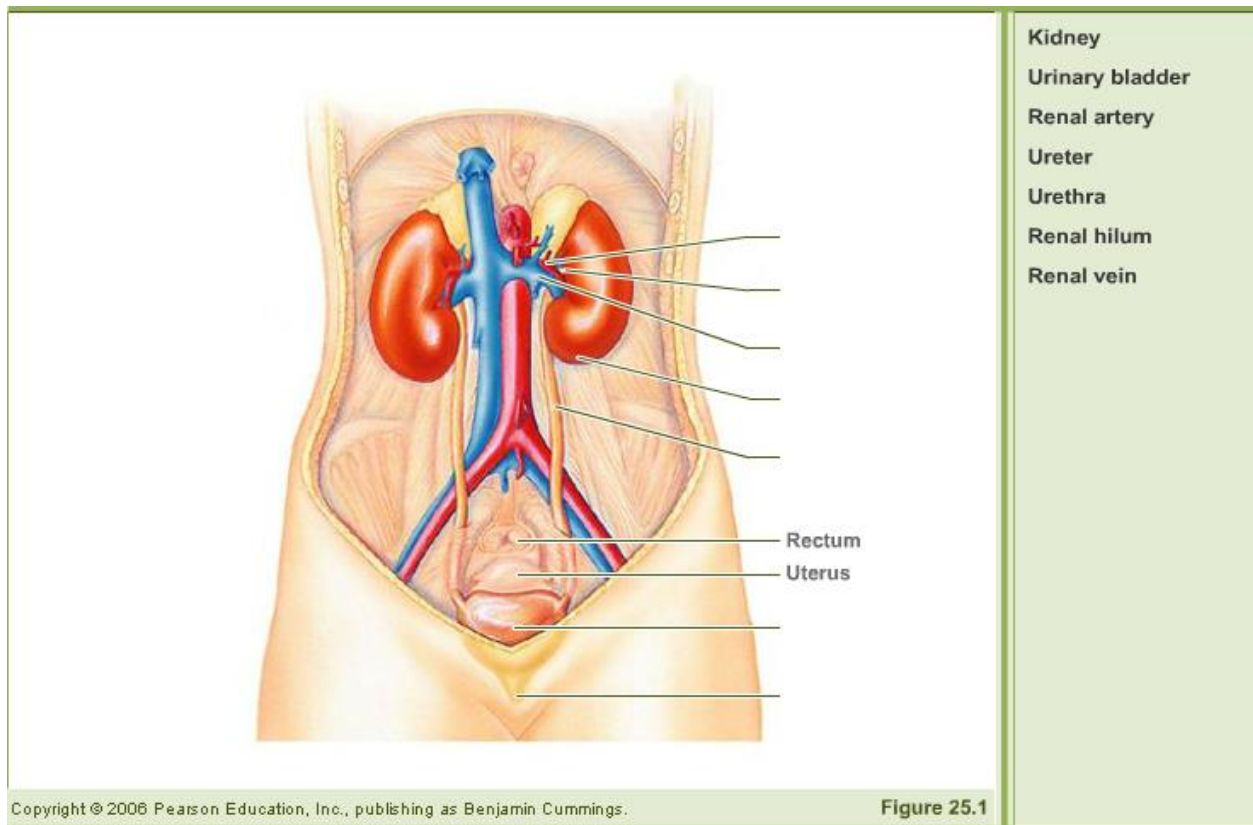
22. – 33. (12 points possible)



34. – 49. (16 points possible)



50. – 56. (7 points possible)



Part 2 (5 points possible for each summary)

Write a brief summary of what each Body function is and its importance. Use complete sentence

57. Protection (Integumentary System)

58. Support (Skeletal System)

59. Movement (Muscular System)

60. Coordination (Nervous System)

61. Integration (Endocrine System)

62. Special Senses

63. Transportation (Cardiopulmonary)

64. Absorption (Digestion)

65. Excretory System

66. Growth and Development (Reproduction)