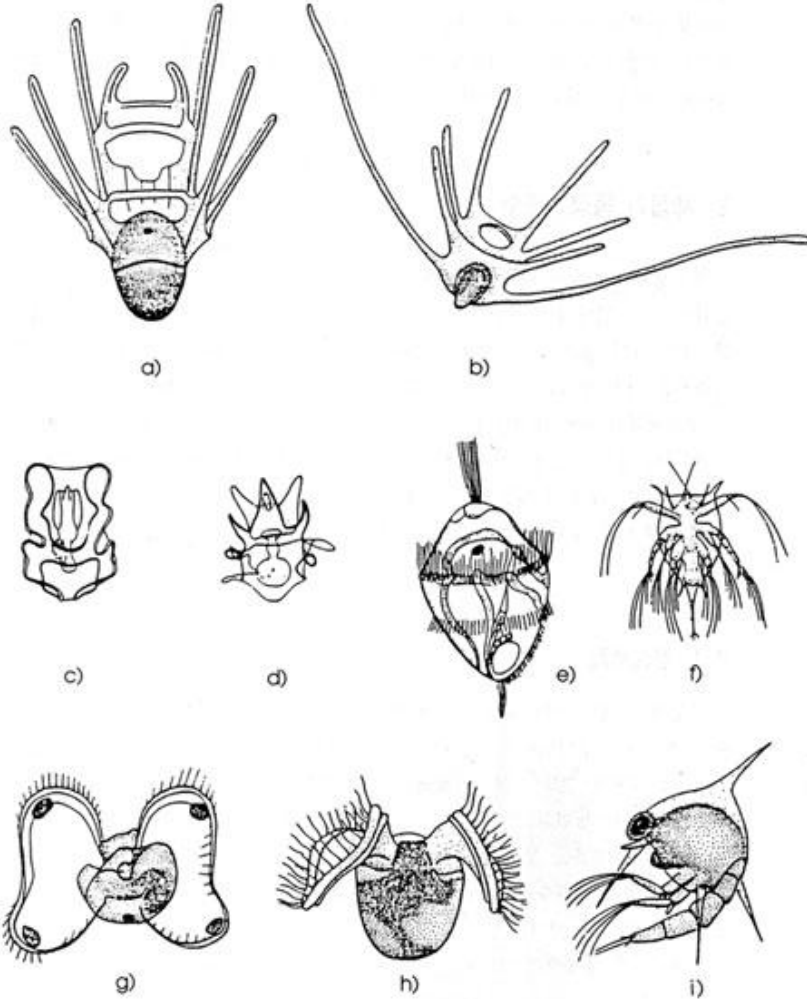


Meroplankton Match-up!

Remember, meroplankton are organisms that exist as plankton for only a portion of their lives. These organisms later develop into part of the nekton or benthos. Look at the organisms below and match them with the appropriate adult form of the organism.



(courtesy of <http://shellfish.cheju.ac.kr/sealife/class-8/images/meroplankton.jpg>)

snail polychete worm crab barnacle seastar sea cucumber sea
 urchin brittle star mollusk